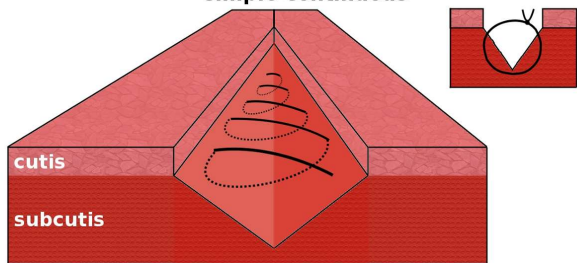


Sutura podkoží

subcutaneous suture

jednoduchý pokračovací

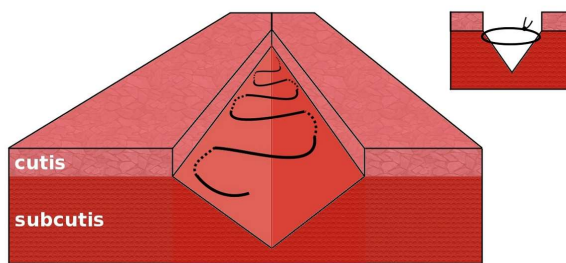
simple continuous



vlákno: vstřebatelné
polyfilamentní
jehla: traumatická i atraumatická
tloušťka: 2/0, 3/0

matracový

matress



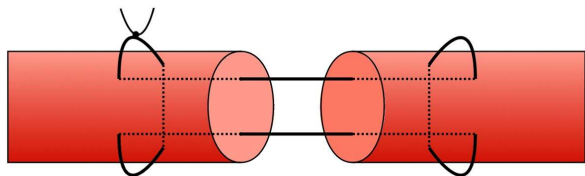
thread: absorbable
polyfilament
needle: traumatic or atraumatic
size: 2/0, 3/0

Sutura šlach

suture of tendons

dle Kesslera

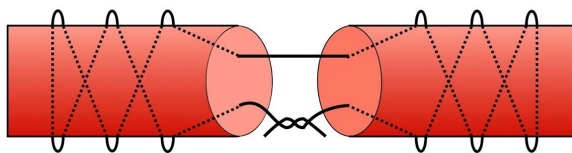
Kessler suture



vlákno: nevstřebatelné
monofilamentní
jehla: atraumatická
tloušťka: 2/0, 3/0

dle Bunnela

Bunnel suture

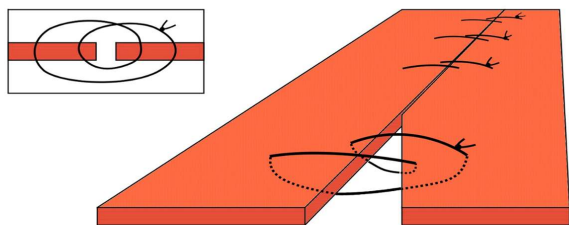


thread: non-absorbable
monofilament
needle: atraumatic
size: 2/0, 3/0

Sutura fascií a kloubního pouzdra

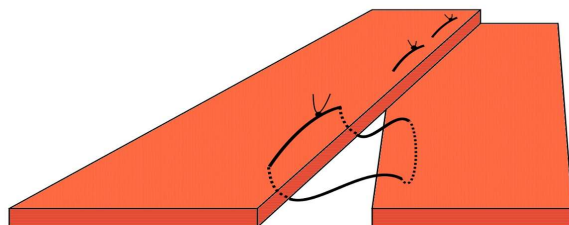
suture of fascia and joint capsule

Far-Far-Near-Near



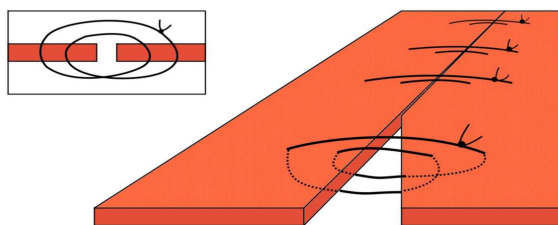
Imbrikace

imbrication



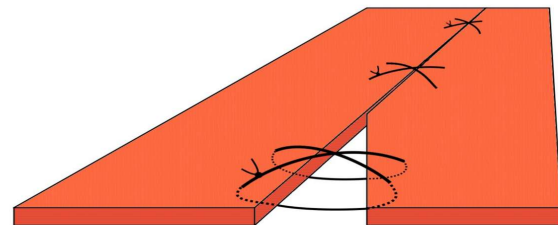
vlákno: nevstřebatelné
monofilamentní
jehla: atraumatická
tloušťka: 2/0, 3/0

Far-Near-Near-Far



Křížový

cruciate



thread: non-absorbable
monofilament
needle: atraumatic
size: 2/0, 3/0