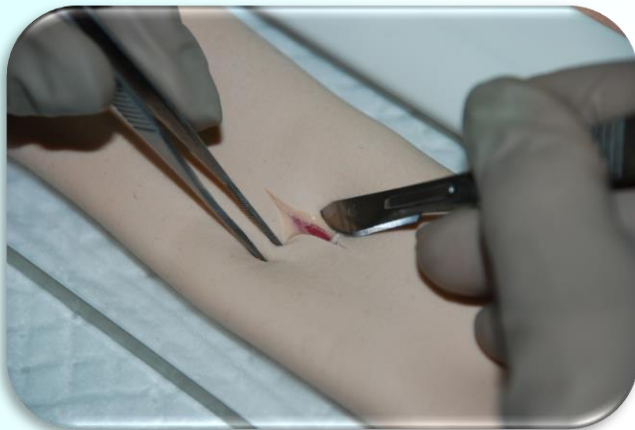


# SIMULATOR – DAY ONE

## 2 layer suture of serous organs

*What do I need?*

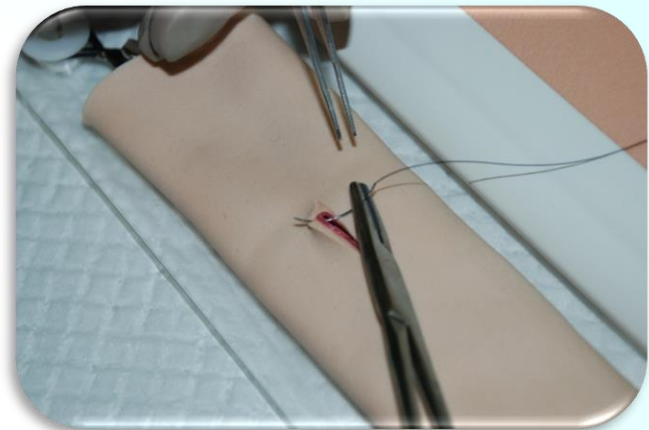
- Needle holder
- Forceps
- Suture material (monofilament)



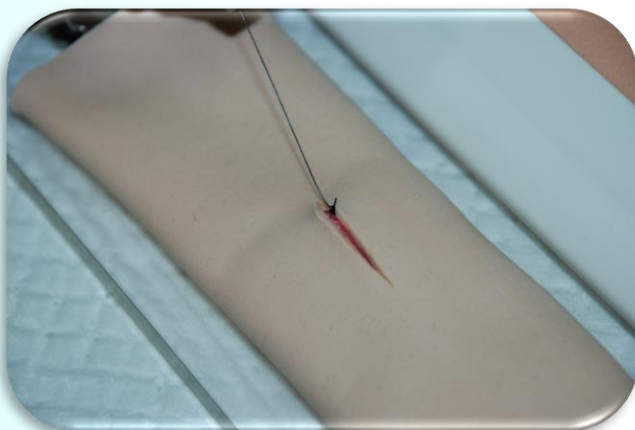
Incision



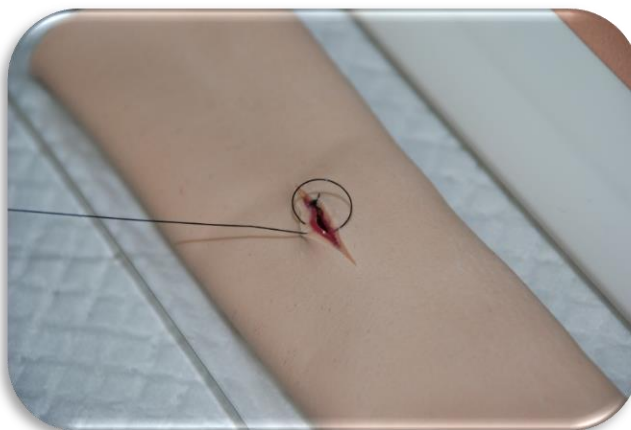
Foreign body removal



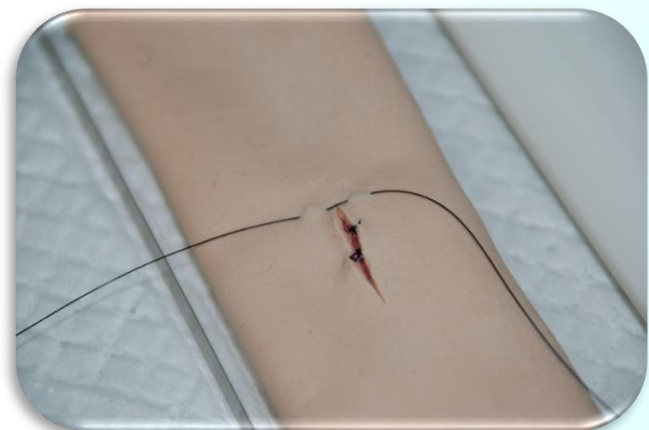
Initial stitch in the mucosa and submucosa



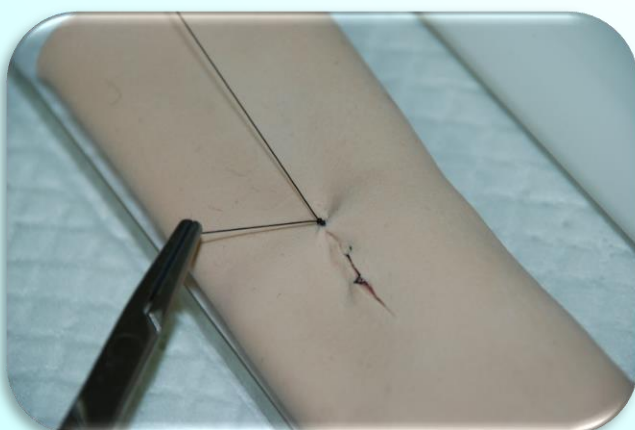
Knotting



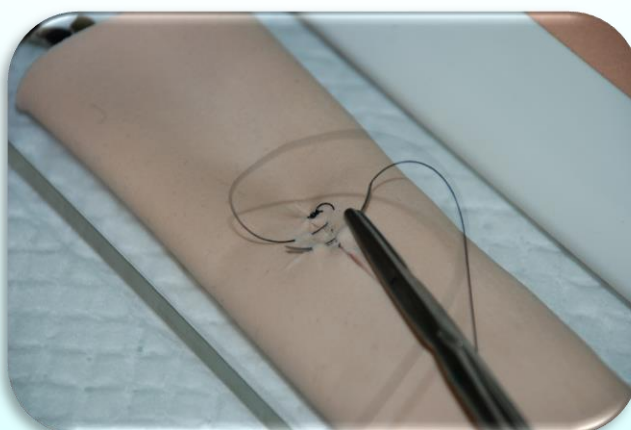
Simple continuous suture in layers of mucosa and submucosa



Initial of the inverting stitch



Knotting



Continuous inverting suture of serous and muscular layer



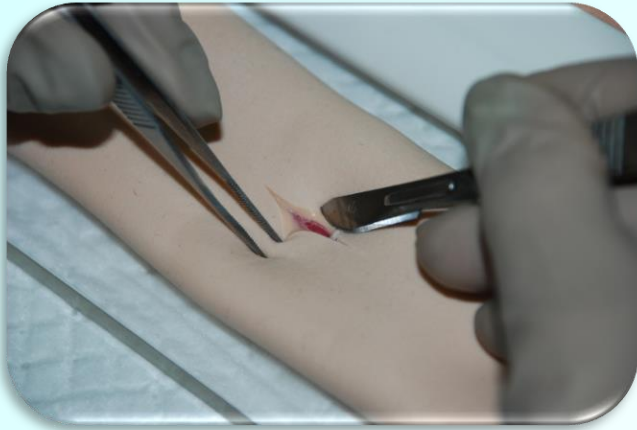
Suture of the intestine in 2 layers

# SIMULATOR – DAY ONE

## One layer suture intestine

*What do I need?*

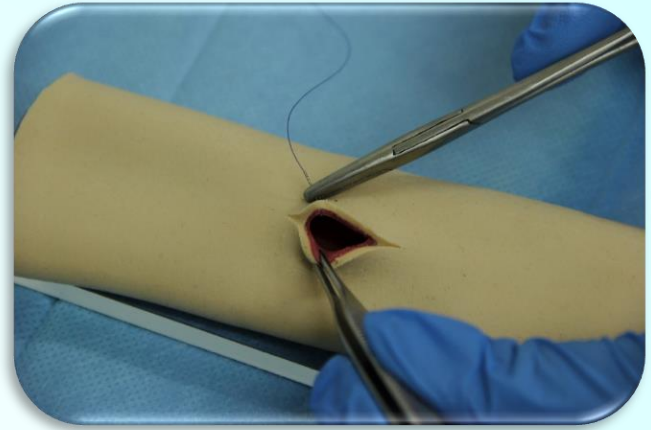
- Needle holder
- Forceps
- Suture material (monofilament)



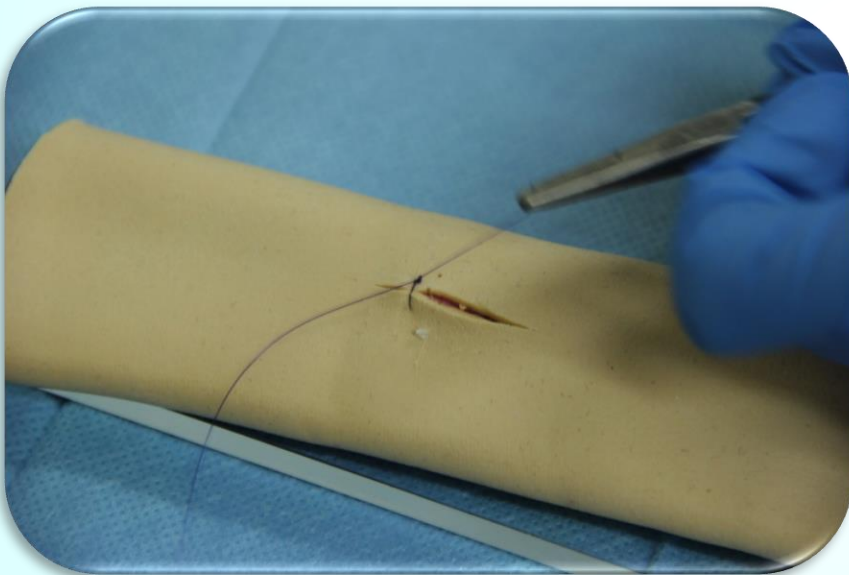
Incision



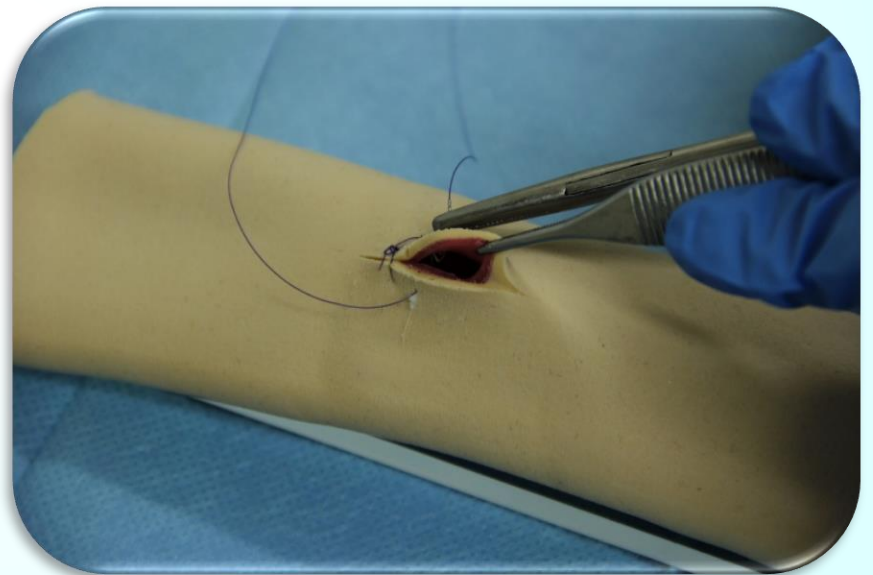
Foreign body removal



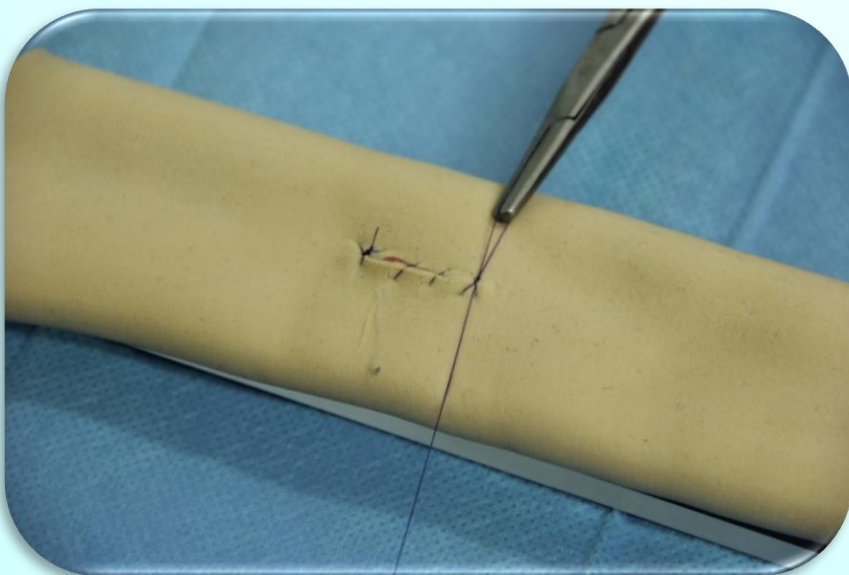
Initial stitch penetrating all layers



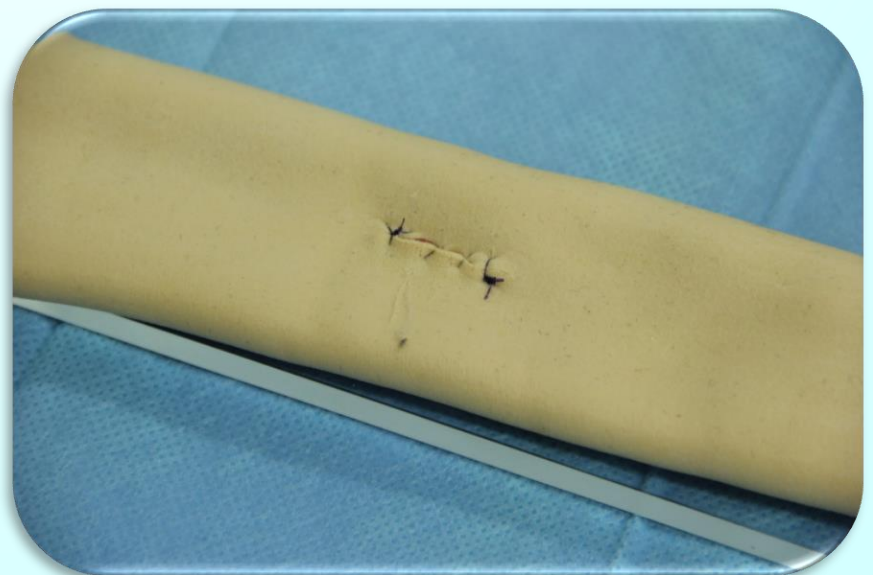
Knotting



Simple continuous suture



Knotting



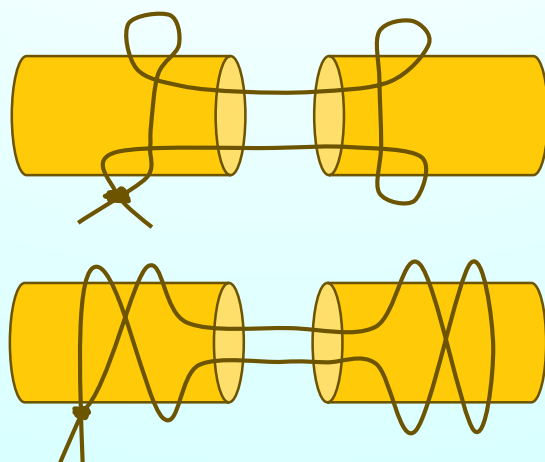
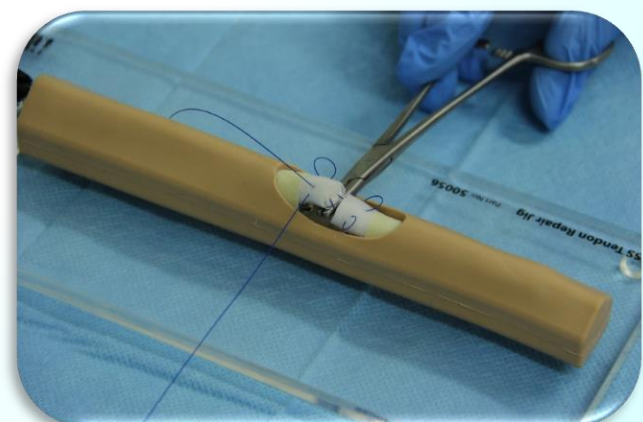
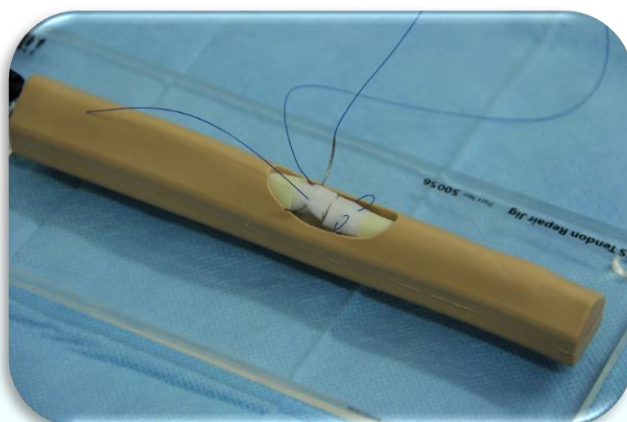
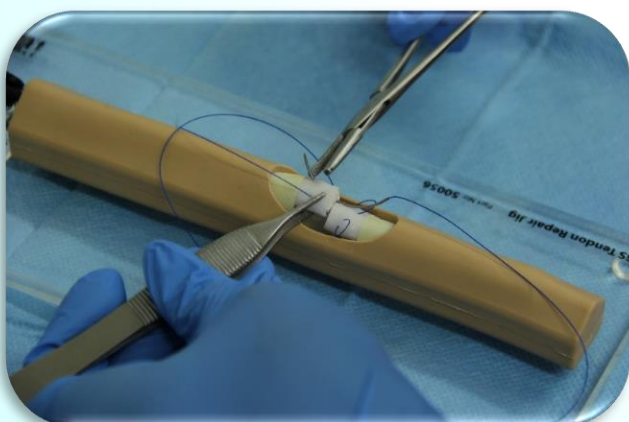
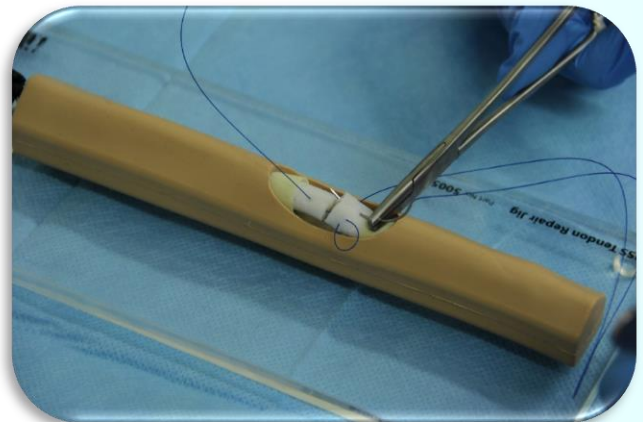
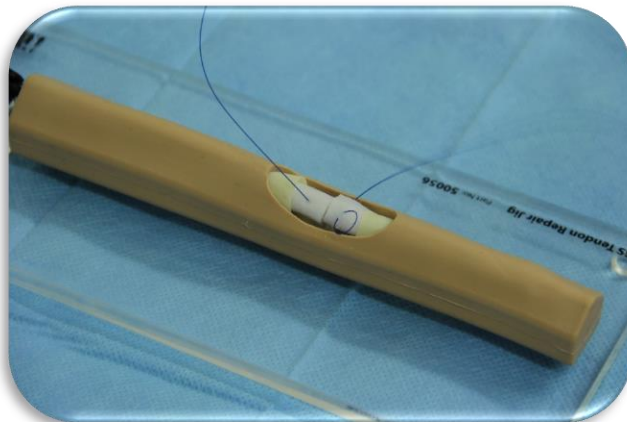
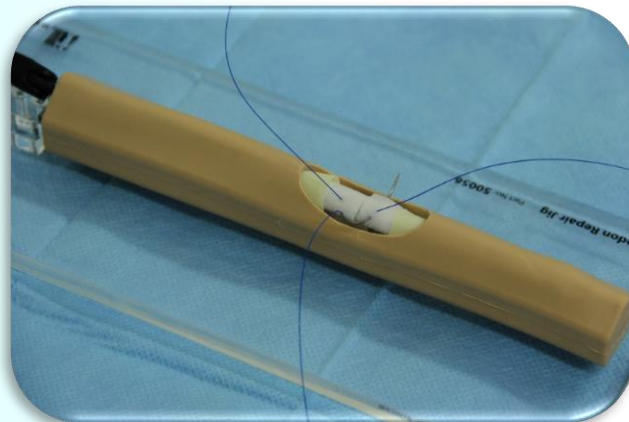
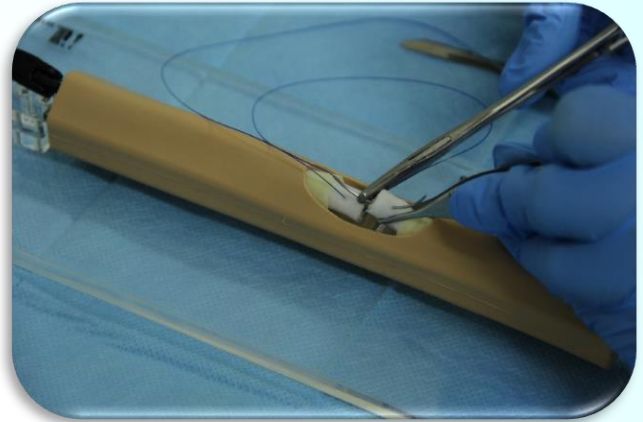
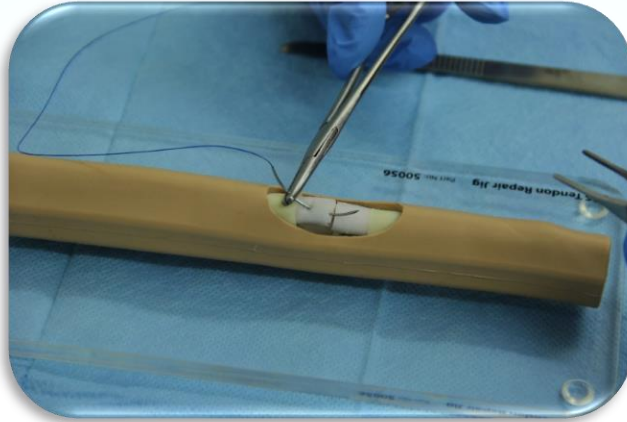
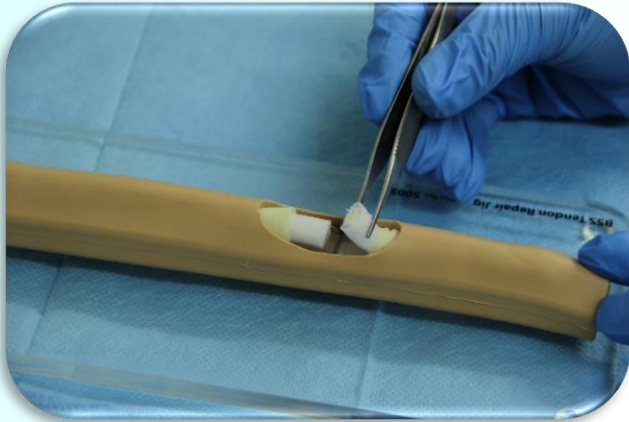
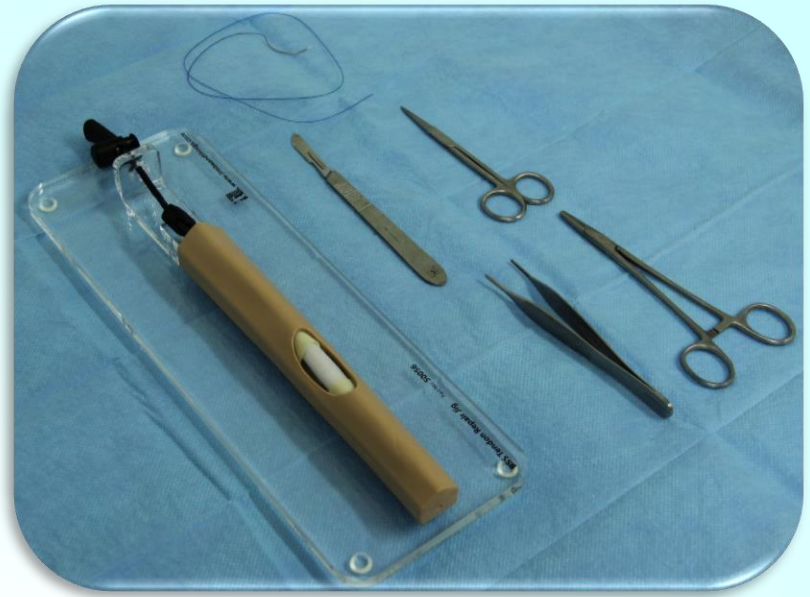
Continuous suture penetrating all layers

# SIMULATOR – DAY ONE

## Tendon suture

*What do I need?*

- Needle holder
- Forceps
- Suture material (monofilament)

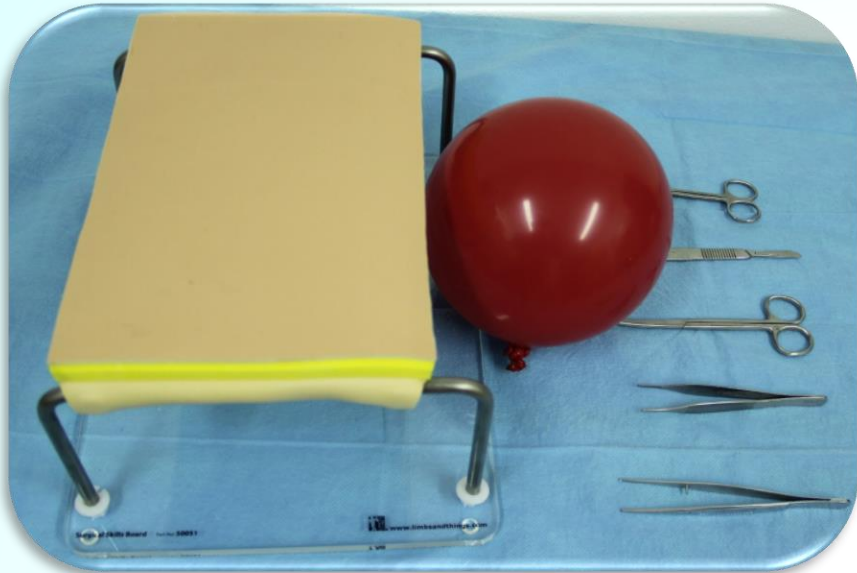


# SIMULATOR

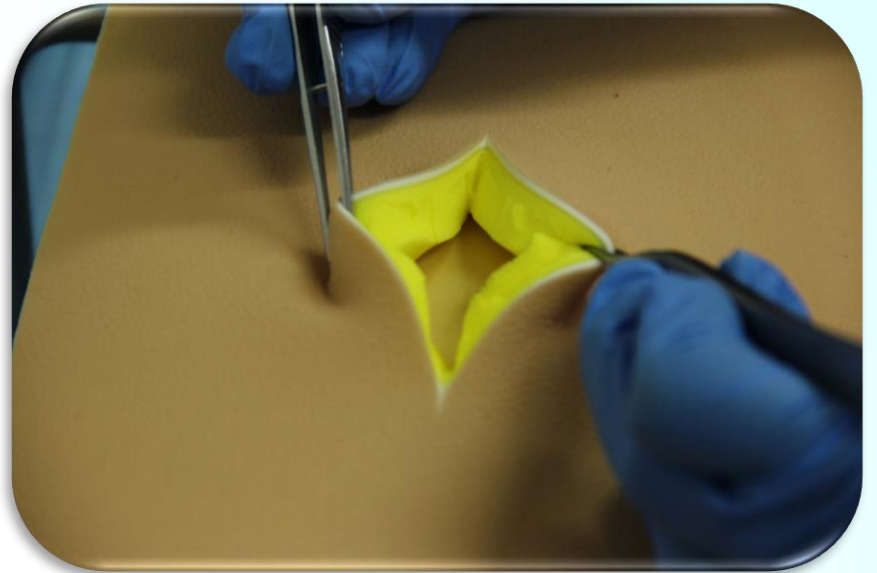
## Abdomen

*What do I need?*

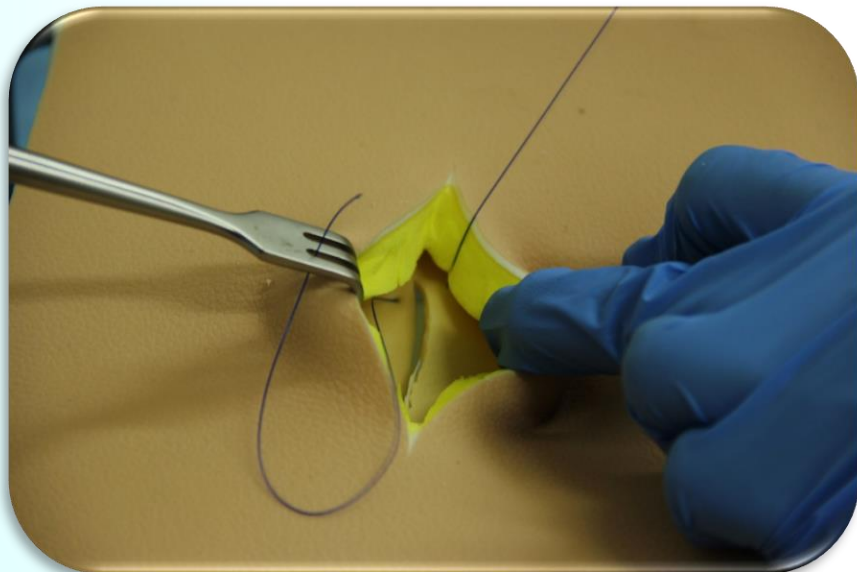
- Needle holder
- Forceps
- Suture material (monofilament)
- Scalpel
- Scissors



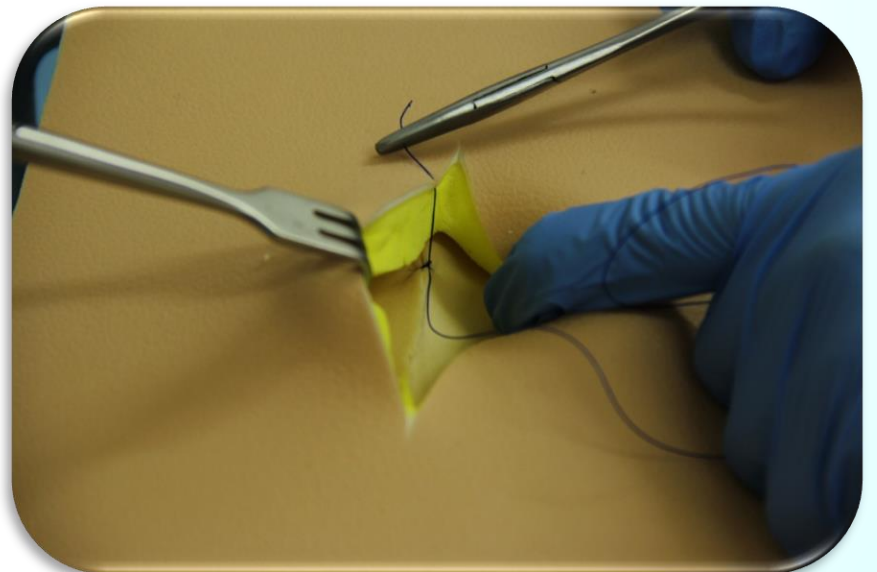
Simulator setup



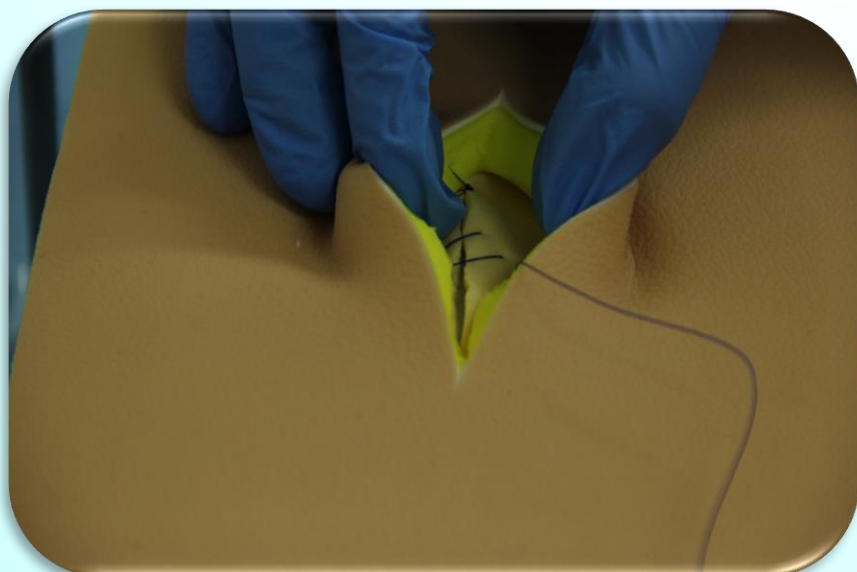
Incision of skin and subcutis



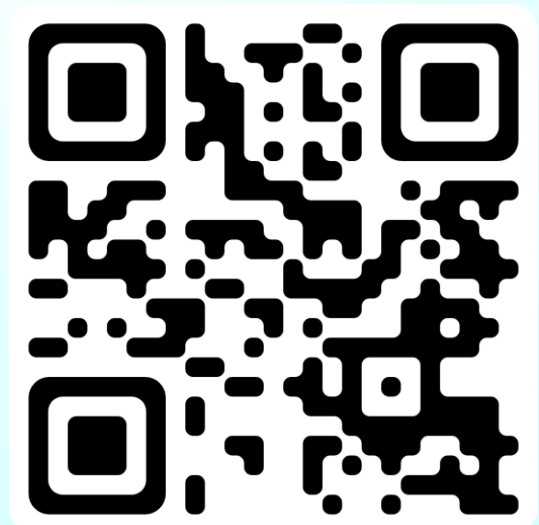
Suture of abdominal fascia



Suture of abdominal fascia



Suture of abdominal fascia - simple continuous

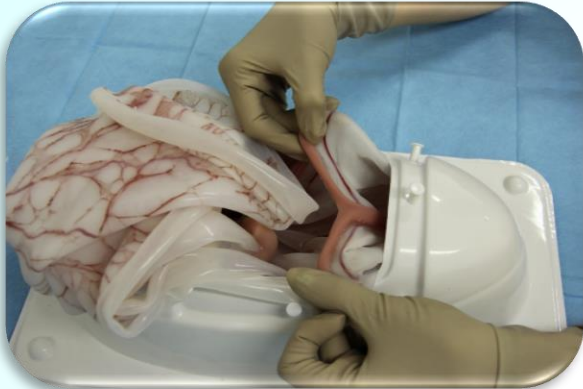


# SIMULATOR

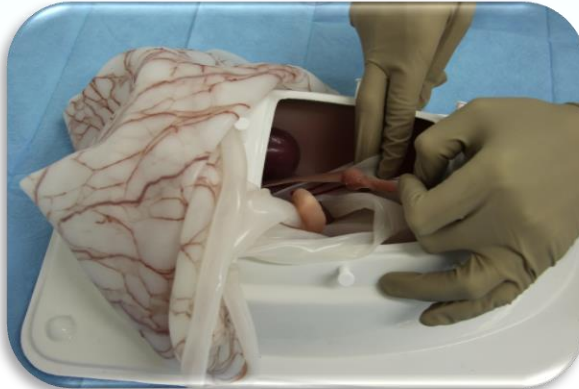
## Spay

*What do i need?*

- Needle holder
- Forceps
- Suture material (monofilament)
- Scalpel
- Scissors
- Hemostat



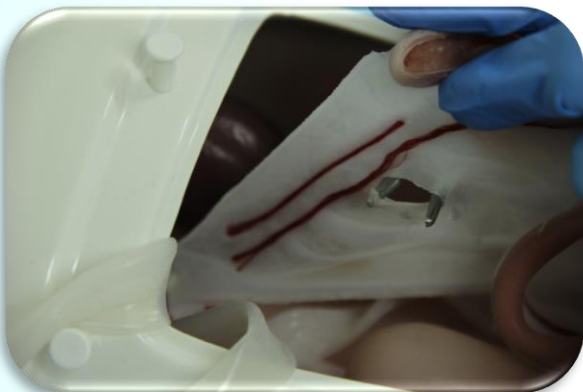
Visualization of uterus



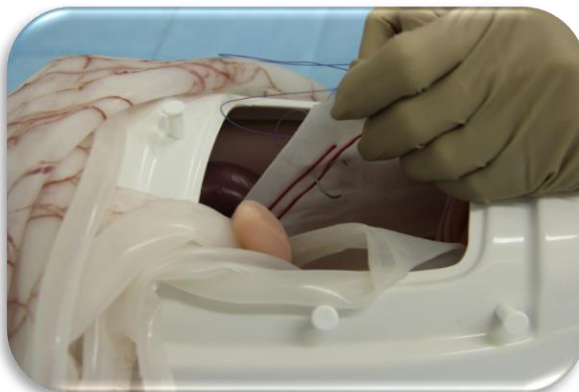
Visualization of *lig. susp. Ovarii*



Ligament transection



Creating a window



First ligature



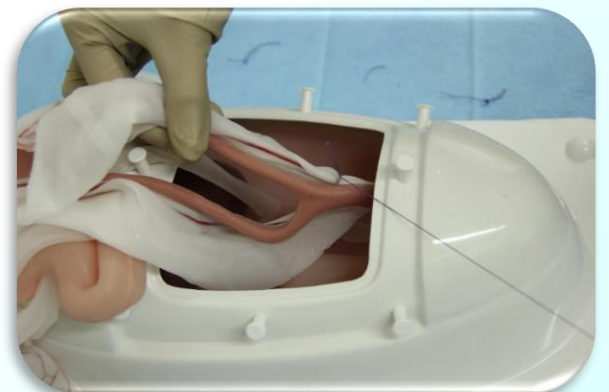
Double ligature



Ovary excision



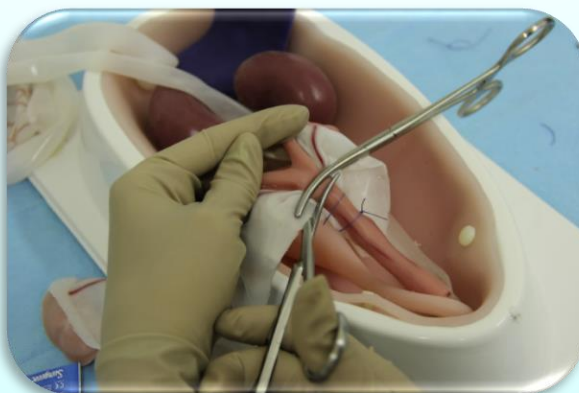
Ligature of *arteria uterina*



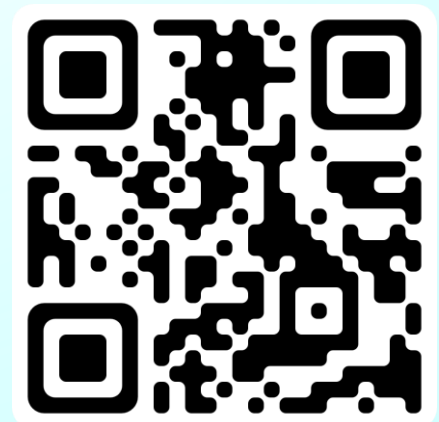
Ligature of *arteria uterina*



Ligature of uterine neck



Double ligature and uterus excision

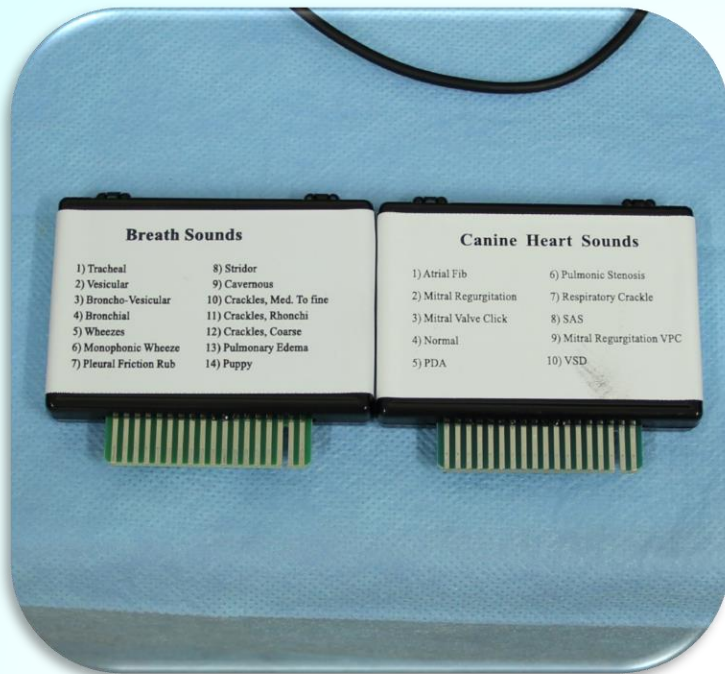


# AUSKULTATION SIMULATOR

## Heart, lungs

*What do I need?*

- Stethoscope



### Lung auscultation

- |                         |                            |
|-------------------------|----------------------------|
| 1) Tracheal             | 9) Cavernous               |
| 2) Vesicular            | 10) Crackles, med. to fine |
| 3) Broncho-vesicular    | 11) Crackles, phonchi      |
| 4) Bronchial            | 12) Crackles, coarse       |
| 5) Wheezes              | 13) Pulmonary oedema       |
| 6) Monophonic wheeze    | 14) Puppy                  |
| 7) Pleural friction rub |                            |
| 8) Stridor              |                            |

### Heart auscultation

- 1) Atrial fibrillation
- 2) Mitral regurgitation
- 3) Mitral Valve Click
- 4) Normal
- 5) PDA
- 6) Pulmonic stenosis
- 7) Respiratory crackle
- 8) SAS
- 9) Mitral regurgitation VPC
- 10) VSD

# SIMULATOR

## CPR

*What do I need?*

- Bag valve mask
- Syringe
- Endotracheal tube
- Bandage



Intubation



Fixation of endotracheal tube



Lung ventilation  
30 breaths per minute



Heart massage  
- Press to 1/3 depth of thorax  
- 120 press per minute



Pulsation check on *arteria femoralis*

